

niroflex 2000®

www.niroflex.com



ULTIMATE HYGIENE ON THE *CUTTING EDGE*

Metal Mesh Gloves & Apparel



**THE ONLY USDA
ACCEPTED METAL
MESH GLOVES
& GARMENTS!**



The Original,
All Steel,
Metal Mesh Glove.

niroflex USA

GLOVES

GU-2500
Wrist Length



GU-2504
3" Extended Cuff



GU-2509
6" Extended Cuff



GU-2515
9" Extended Cuff



GU-2532
Shoulder Length



All gloves are also available in **ULTRA LIGHTWEIGHT TITANIUM WIRE**. Simply change **GU** in the style number to **GT**. For example, **GT-2504** is a titanium glove with a 3" extended cuff. Some gloves styles are also available in **"BIG RINGS"** or **"SUPER DETECTABLE."** Please contact us for more information.

**ALL GLOVES
ARE REVERSIBLE
TO FIT EITHER
HAND!**

Today, you need the dual protection of Niroflex2000® metal mesh gloves. Niroflex2000 is the first and only ultra-hygienic mesh glove designed to protect the hands of your workers and safeguard your food from contamination. More than 12,000 tiny reinforced links and the patented Niroflex clip closure system guarantee a secure, comfortable custom fit for every worker. Niroflex2000's natural hand shape and food-safe TPU stiffener (on extended cuff styles) make it the most comfortable mesh glove available.



GS-100
Glove
Tensioner

Even though our mesh gloves are the most ergonomically-correct mesh gloves in the world, the loose nature of ring mesh can still sometimes be a challenge for proper fit. We now offer a simple, sanitary polymeric mesh glove tensioner that fits over the mesh glove on the back of the hand and provides a tighter fit for the working area of the palm and fingers without hindering comfort or dexterity. Sold by the pack of 100 each.

APPAREL & APRONS

- 12SS** Short Vest, 12" Front & Back with Double Mesh Sleeves
- 28S** Single Sleeve, Full Arm with Adjustable TPU Straps
- 28SS** Double Sleeve, Full Arm with Adjustable TPU Straps
- 28SS-NS** Double Sleeve, Full Arm STRAPLESS Design
- 9130HBT** Half Back, Bolero Tunic with Full Sleeves

- 2222A** Apron, 22" Width, 22" Length
- 2230A** Apron, 22" Width, 30" Length
- 2234A** Apron, 22" Width, 34" Length
- 2240A** Apron, 22" Width, 40" Length
- 2534A** Apron, 25" Width, 34" Length
- 2540A** Apron, 25" Width, 40" Length

Split Leg Design, with Leg Straps, available in 25" x 34" (2534ASL) & 25" x 40" (2540ASL) aprons



We are experts at custom design garments. Even if a garment is not listed here, we can make it!

Apparel available in sizes S-XL, with custom solutions available upon request.

12SS | Short Vest



28SS-NS | Double Sleeve (No Straps)



9130HBT | Half Back Tunic



2234A | Apron



JUST LIKE OUR GLOVES, OUR GARMENTS HAVE NO FABRIC STRAPS. ALL NIROFLEX GARMENTS COME WITH LIQUID-RESISTANT & FOOD-SAFE TPU (THERMOPLASTIC URETHANE) STRAPS

NIROFLEXUSA HAS THE ONLY MESH SAFETY PRODUCTS TO:



1. Be included on the USDA Accepted Equipment List



2. Meet the strict requirements of Europe's (CE) EN1082-1 mesh glove requirements and DIN EN ISO 13998:2003 (Protection level 2) for aprons and garments



3. Be produced from mesh made in an ISO certified facility

Niroflex2000 – Unsurpassed Quality.

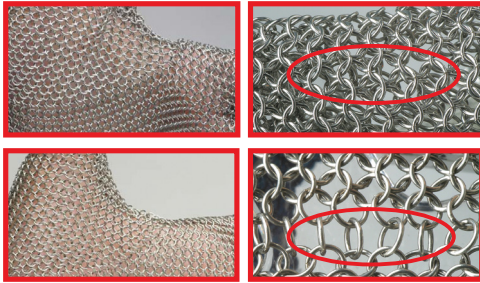
All Niroflex mesh apparel is available in either **STAINLESS STEEL** or **TITANIUM**, and **4.2 mm RINGS** or **7.0 mm RINGS**:

- Add **S4** to the style number for stainless steel, 4.2 mm ring
- Add **S7** to the style number for stainless steel, 7.0 mm ring
- Add **T4** to the style number for titanium, 4.2 mm ring
- Add **T7** to the style number for titanium, 7.0 mm ring

For example, **S4-2222A** is a 4.2 mm stainless steel 22"x 22" apron

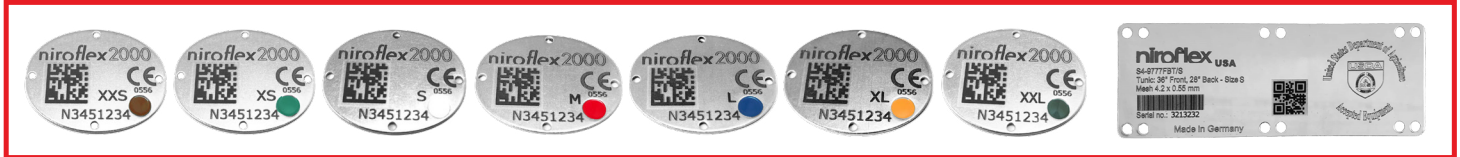
WHY CHOOSE NIROFLEX?

niroflex 2000®



Most other mesh gloves are assembled with joining rings simply attaching adjacent parts. As a result, the gaps at glove seams can be more than 6 mm, easily big enough for a knife point. Niroflex2000® gloves are assembled by weaving the joining ring around (*over and under*) at least 4 adjacent rings, in exactly the same way as the basic mesh material is interlocked. As a result, the seams on Niroflex2000 gloves are as strong, safe and secure as any other part of the glove and the maximum gap is only 3 mm.

“OTHER”
MESH GLOVES



NIROFLEX2000 HELPS COMPANIES KEEP TRACK OF THEIR MESH GLOVES, A VALUABLE ASSET

Metal detectable, color-coded (*by size*) numerical bar code tags are standard on all Niroflex2000 gloves. Record the number when you issue the glove to an employee and make certain that it is returned on time. Niroflex2000 tags can also help with HACCP compliance, as the tags can be used to track cleaning schedules of mesh gloves. Niroflex aprons and garments also come with metal detectable serial tags that clearly show the style number and key measurements.



NIROFLEX2000'S DESIGN IS INHERENTLY SANITARY! Niroflex2000 gloves have no place for bacteria to hide, no fabric straps, no buckles, no studs, no rubber bands, and no springs so they clean quickly and easily without contamination risk.



NIROFLEX2000 SAVES YOU MONEY! Up to ²/₃ of all mesh gloves sent in for repairs need fabric straps replaced. Switch to Niroflex2000 and eliminate unnecessary repairs. Plus, you can reduce your mesh glove stocking requirements by sending fewer gloves for repairs.



ONLY NIROFLEX2000 HAS NIROFLEX TPU STIFFENERS, WHICH:

- Stand up to cleaning chemicals and steam cleaning
- Have excellent bacteria resistance
- Have excellent resistance against oils, fat, blood, diluted bleaches and acids
- Stay flexible in very cold and very hot temperatures (*up to 110°C / 230°F*)
- Are recyclable

WHAT PEOPLE ARE SAYING ABOUT niroflex 2000®



“Our poultry plant switched to Niroflex2000 gloves in 2013 and we have never looked back. We initially chose Niroflex2000 because we were having problems with our previous fabric-strap gloves breaking rings too easily. The Niroflex clip is strong enough to keep the gloves closed, but adjustable for comfort. Niroflex2000 mesh gloves have proven to be the longest lasting gloves our plant has used.”

– K.T. | Large US East Coast Poultry Processor

*“We were using mesh tunics from another manufacturer and had lots of problems. Shoulders were blowing out and the front opening kept tearing during donning and doffing. Our local safety distributor invited a NiroflexUSA rep to visit and we were impressed with the quality of their garments. Niroflex heard what our concerns were (with our old mesh), and customized a solution for our needs. Previously our plant looked for lower priced solutions, but we found we were getting what we paid for. And after the success with our Niroflex garments, we now use Niroflex2000 mesh gloves too! **Now I can't see our plant ever switching away from Niroflex because we get much better value for our 'mesh dollar.'**”*

– A.B. | Large US Midwestern Beef Processor

niroflex
USA

© 2021 Niroflex USA

P.O. BOX 90 | DEERFIELD, IL 60015 USA | PHONE: +1 (847) 400-2638 | FAX: +1 (847) 919-3809

WWW.NIROFLEX.COM | METALMESH@NIROFLEX.COM